

To be presented at Committee  
meeting scheduled for 1/31/18



Roberts Field Advisory Committee  
*January 31, 2018 Meeting*

1/31/18

# Meeting Agenda

- Public Input
- New Playground Project Kick-Off Discussion
  - New Playground Design/Build Vendor Introduction
  - Project Expectations, Process and Timeline
  - *Design and Construction Milestones - draft*
- Second Arborist Tree Report Update & Discussion
- Twist Slide Recycling Update
- Fundraising Update & Discussion
- Volunteer Update & Discussion
- February Committee Meeting Schedule

# New Playground Project Update & Discussion

- Designer Selection Advisory Group recommended (4-1) to award bid to O'Brien & Sons (Landscape Structures representative).
- On Jan 31, the Town Manager recommended the same, and the Board of Selectmen voted unanimously in favor.
- O'Brien & Sons ([www.obrienandsons.com](http://www.obrienandsons.com))
  - M.E. O'Brien & Sons is a third generation, family operated business, founded in 1929 and located in Medfield. Known as the "New England Recreation Specialists", they are the exclusive Landscape Structures representative in New England.
  - Represented by Meghan O'Brien and Joe Amore



# Committee Project Discussion

- Design Process and Timeline
- Public Input Activities
  - Public Input Session/Presentation
  - Elementary School Assembly Design Day
- Playground Design Expectations
  - Committee Design Expectations and Questions
  - Playground Design Survey Results
- Community Build Needs and Timeline

# Roberts Field Advisory Committee

## Design and Construction Milestones - draft

<b>Timing</b>	<b>Project Milestones</b>
January 29, 2018	BOS Meeting: Award Contract – <i>BOS/Town Manager Approval</i>
Feb 2018	“Design Day” and Public Input Session(s)
March 2018	Finalize Playground Design - <i>Town Manager Approval</i>
March 2018	Begin Corporate Sponsorship and Grant Writing
April 2018	Purchase New Equipment (4-6 weeks delivery)
April 2018	End Carved Brick/Slat Fundraising Campaign?
May 2018	Site Prep
June 2018	Equipment Delivery, “Build Week”
June 2018	Playground Grand Opening

# Roberts Field Advisory Committee

## Friendship Park Playground Expectations Summary

- **Nature themed, inclusive playground** designed to provide a safe and fun place where children of **all abilities can play together barrier free, is developmentally appropriate for children with and without disabilities, has an open “sensory rich” environment, and encourages physical and social play for all.**
- Include a **natural area(s) using landforms** such as open green lawns, rolling hill(s), berms, tunnel(s), sandy digging area, and landscaping designed with the intent of bringing children and people closer to nature, and encouraging fun activities like digging in the sand, rolling down hills, or playing chase or hide and seek. The **natural areas must be segregable for maintenance (mowing)**. A nature themed “scavenger hunt” playground activity has been discussed to connect the playground to the natural areas of the Park.
- With the inclusive playground design, expectations are that the playground designer will consider using a **mix of fully accessible surfaces** (such as Poured-in-place rubber, mats/tiles, bonded rubber mulch and synthetic turf with rubber in fill, or turf) wood fiber, sand, grass, brick, concrete or other.
- There is a strong desire for **community input during the final playground design**. A **playground survey** was recently completed which helps to define community expectations for equipment and design ([found here](#)). Additional public input opportunities have been discussed, including an **elementary school “design day”** and playground design **public input session**. “My Dream Playground” drawings have been collected by mail, email, and at the library. The 40+ drawings will be displayed at the library and online during the final design process.

# Roberts Field Advisory Committee

## Friendship Park Playground Expectations Summary (continued)

- There is strong community support to **protect the trees within the playground** construction area and in the Park and to add additional shade to the playground. The Master plan included an inventory of protected trees and Tree Protection Guidelines ([found here](#)).
- Master Plan expectations include that **taller and “noisier” equipment will be located away from abutting properties where possible**. The Master Plan includes a sound mitigating landscaped berm buffer near abutting property, and the playground design should take advantage of existing sound and visual mitigation, and provided shade of existing trees. **Landscaping is expected in the final design.**
- The brick pathway connecting the lower parking lot and playground will be maintained. Additionally, the Friends of Roberts Field is planning a “Buy a Brick” campaign to create a **new brick path from the upper parking lot to the playground**, possibly connecting to the existing brick pathway. **Adding more brick pathways or a meditation labyrinth** to the interior of the playground has been discussed, and could possibly be funded by the “Buy a Brick” campaign.
- Funding for the new inclusive playground was provided at the Chelmsford 2017 Fall Town Meeting. The playground funding presentation ([found here](#)) outlined the community and committee expectations for the inclusive playground.
- **For the Community Build, the committee expects support** and direction including volunteer recruitment, planning, scheduling, and oversight for construction activities. Fundraising help is also a plus. Volunteer recruitment plans are underway.

# Roberts Field Advisory Committee

## Project Kick-off Questions

### **Playground Design**

- What is your playground design process? Timetable?
- How have you previously incorporated community input into the design process?
- What are some of your ideas for playground “landform play areas”? What have you built?
- How will your design and equipment deliver inclusive, fun for all play, and a nature-themed experience?
- Can your design include custom work, like sensory walls (animal tracks in concrete), brick pathways, meditation labyrinth gardens, fencing, etc?
- Will your design include landscaping?
- Can you work within the Park’s “Tree Protection Guidelines”?

### **Community Build**

- What is your community build process? Timetable?
- What community build projects have you worked on previously?
- What types of jobs do volunteers perform at your community build projects?
- What services and support do you offer volunteers before and during the community build?



# Roberts Field Advisory Committee

## Project Kick-off Questions (continued)

### **Final Design Deliverables**

- Will you provide a cost savings amount for the community build?
- Will itemized equipment costs be provided (for sponsorships)?
- Will equipment maintenance information including life span, maintenance needs and suggested maintenance schedule be provided?
- Will an “artists rendering” and CAD drawing be provided of the final playground design?

### **Equipment**

- Does your equipment use fully kid-safe materials? PVC? Cochlear implant friendly?
- Do you have a seated zip line?
- Do you have a tall twist slide?
- Do you have a wheelchair accessible merry go round?
- What is the repair process for maintenance during the warranty period? Does your company make the repairs or the Town?
- Do you offer maintenance and warranties for fall area surfaces (not including wood fiber)?

## Friendship Park Design and Equipment Survey Results

### Q3 Do you have any special needs or accommodations

- Yes, **autistic and cerebral palsy**
- Yes autism hence sensory, easily accessible, protect falls
- Yes, my daughter is in a **wheel chair** and would like to be able to **swing in her chair**. Access to the playground should also be handicap accessible
- **Down syndrome. Larger holders** . If you are climbing a wall. Makes easier for her to grasp and stay on
- One of my sons is very **low muscle tone**. Most parks in our area have slides that are high off the ground and he has a hard time getting off the slide at the end.
- I am a special needs Physical therapist and a **special needs bucket swing** would be a nice addition to the park.
- Yes I have a child who has a neurological disorder and it's **hard for him to climb** like other children also has autism
- One of my children is wheelchair bound. He needs full support to propel and maneuver his wheelchair. **So wheelchair/Universal access** is huge for us.
- **Handicap swing. Accessibility to playground equipment** by providing wide ramps to accommodate adult and child, low balance beams so adult can help child, **sensory playground equipment** (spinning seats, bouncy platforms)
- Yes, my son has CP & needs extra support (**seat buckles**, ect) He has limited core strength & can not walk (he'll be 4 in March). Adaptive **swing seats & gait trainer** access would be wonderful.
- Short Stature. It is helpful to have at least one "**big kid**" **swing** on the lowest level so that he can access it himself and be independent. He is 6, but the size of a three year old.
- Yes wheelchair bound

## Friendship Park Design and Equipment Survey Results

### Q3 Do you have any special needs or accommodations (continued)

- Yes, my daughter is 13 and has intellectual disabilities & autism. She is **very sensory seeking**. Loves things that spin and the motion of the zipline.
- My daughter has epilepsy.
- it would be great for the park to be **handicap accessible**; especially walkers and wheelchairs
- Handicap accessible
- My youngest is autistic and has epilepsy. We tend to seek out sensory play structures (**sandbox sensory playground equipment** Etc.) and avoid high parts of play structures. Not sure if they will be apart of the new plan but the trails are our favorite! Thank you for including this question and seeking input for all of our kids :)
- DMDD
- My son has autism and can bolt. A **fenced area** would be appreciated.
- **Allergic to the little rubber/plastic pieces** lining the ground of some playgrounds (as opposed to sand/mulch ground)
- Older child with autism and intellectual disability Please **do not limit the age to under 12!** Older children with special needs would love to have a place to play also.
- yes juvenile arthritis, **difficulty climbing**
- ASD 3 yr old with boundary issues. A **fence is necessary** with him at a playground.
- My daughter is very sensory driven - loves **sand boxes, swings and roundabouts**
- Wheelchair access, swings with support, and **slides big enough for adults to bring children down**
- Legally blind- so bright contrasting colors especially on steps or platforms to slides
- we **love the shade** and the fact that the existing playground doesn't get hot (the slides etc)
- Wheelchair dependent due to congenital muscular dystrophy
- Sensory processing disorder
- Grandparent, **hip replacement**

# O'Brien and Sons - ME0175952D



## AGES 5-12

TOTAL ELEVATED PLAY COMPONENTS	19	0	REQUIRED	0
TOTAL ELEVATED COMPONENTS ACCESSIBLE BY RAMP	14	REQUIRED	10	
TOTAL ELEVATED COMPONENTS ACCESSIBLE BY TRANSFER	7	REQUIRED	6	
TOTAL ACCESSIBLE GROUND LEVEL COMPONENTS SHOWN	24	REQUIRED	6	
TOTAL DIFFERENT TYPES OF GROUND LEVEL COMPONENTS	7	REQUIRED	7	

## AGES 2-5

TOTAL ELEVATED PLAY COMPONENTS	10	0	REQUIRED	0
TOTAL ELEVATED COMPONENTS ACCESSIBLE BY RAMP	10	REQUIRED	5	
TOTAL ELEVATED COMPONENTS ACCESSIBLE BY TRANSFER	13	REQUIRED	3	
TOTAL ACCESSIBLE GROUND LEVEL COMPONENTS SHOWN	13	REQUIRED	3	
TOTAL DIFFERENT TYPES OF GROUND LEVEL COMPONENTS	7	REQUIRED	7	

Estimated manufacturing time:  
6 weeks from the  
time of LSI order acceptance.

LSI  
landscape  
structures



The play components identified on this plan are IPEMA certified. Please make certain to proceed with the use and layout of these components conform to the requirements of ASTM F1487. To verify product certification, visit [www.ipema.org](http://www.ipema.org)

THIS PLAY AREA & PLAY EQUIPMENT IS DESIGNED FOR AGES 2-12 YEARS UNLESS OTHERWISE NOTED ON PLAN.

IT IS THE MANUFACTURER'S OPINION THAT THIS PLAY AREA CONFORMS TO THE A.D.A. ACCESSIBILITY STANDARDS, ASSUMING AN ACCESSIBLE PROTECTIVE SURFACING IS PROVIDED, AS INDICATED, OR WITHIN THE ENTIRE USE ZONE.

THIS CONCRETE PLAN WAS BASED ON INFORMATION AVAILABLE TO US PRIOR TO CONSTRUCTION. EXISTING SITE INFORMATION INCLUDING SITE CONDITIONS, EXISTING UTILITIES, SOIL CONDITIONS, AND SURFACE SOLUTIONS SHOULD BE OBTAINED, CONSULTED, & UTILIZED IN THE FINAL DESIGN. PLEASE VERIFY ALL DIMENSIONS OF PLAY AREA, SIZE, ORIENTATION, AND LOCATION OF ALL EXISTING UTILITIES, EQUIPMENT, AND SITE CONDITIONS PRIOR TO CONCRETE. SLIDES SHOULD NOT FACE THE USER AT 100% SUN.

CHOOSE A PROTECTIVE SURFACING MATERIAL THAT HAS A CRITICAL HEIGHT VALUE TO MEET THE MAXIMUM FALL HEIGHT FOR THE EQUIPMENT (SEE ASTM F1487 STANDARD CONSUMER SAFETY PERFORMANCE SPECIFICATION FOR PUBLIC USE SECTION 8 CURRENT REVISION). THE SURFACING MUST BE WELL DRAINAGE. IF THE TOTAL EDGE HEIGHT NATURALLY EXCEEDS 10" OR MORE, USE 1/4" PER FOOT TO A STORM SEWER OR A TRENCH DRAIN.

ACCESSIBLE/PROTECTIVE SURFACING TO BE A COMBINATION OF UNITARY AND LOOSE FILL MATERIALS.

IT IS THE MANUFACTURER'S OPINION AND INTENT THAT THE LAYOUT OF THESE COMPONENTS CONFORMS WITH THE U.S. CONSUMER PRODUCT SAFETY COMMISSION'S (CPSC) HANDBOOK FOR PUBLIC PLAYGROUND SAFETY.

DESIGNED BY:

JRA

COPYRIGHT: 12.27.2017  
LANDSCAPE STRUCTURES, INC.  
601 7th STREET SUITE 100 - P.O. BOX 196  
CHELMSFORD, MASSACHUSETTS 01824  
PH: 1-800-328-0228 FAX: 1-781-472-8581

Date: Previous Drawing #: Details:



55 West Street  
PO Box 650  
Melville, MA 02552-0650  
Phone 305-358-4200  
Fax 305-358-2817

ROBERTS FIELD  
CHELMSFORD, MA

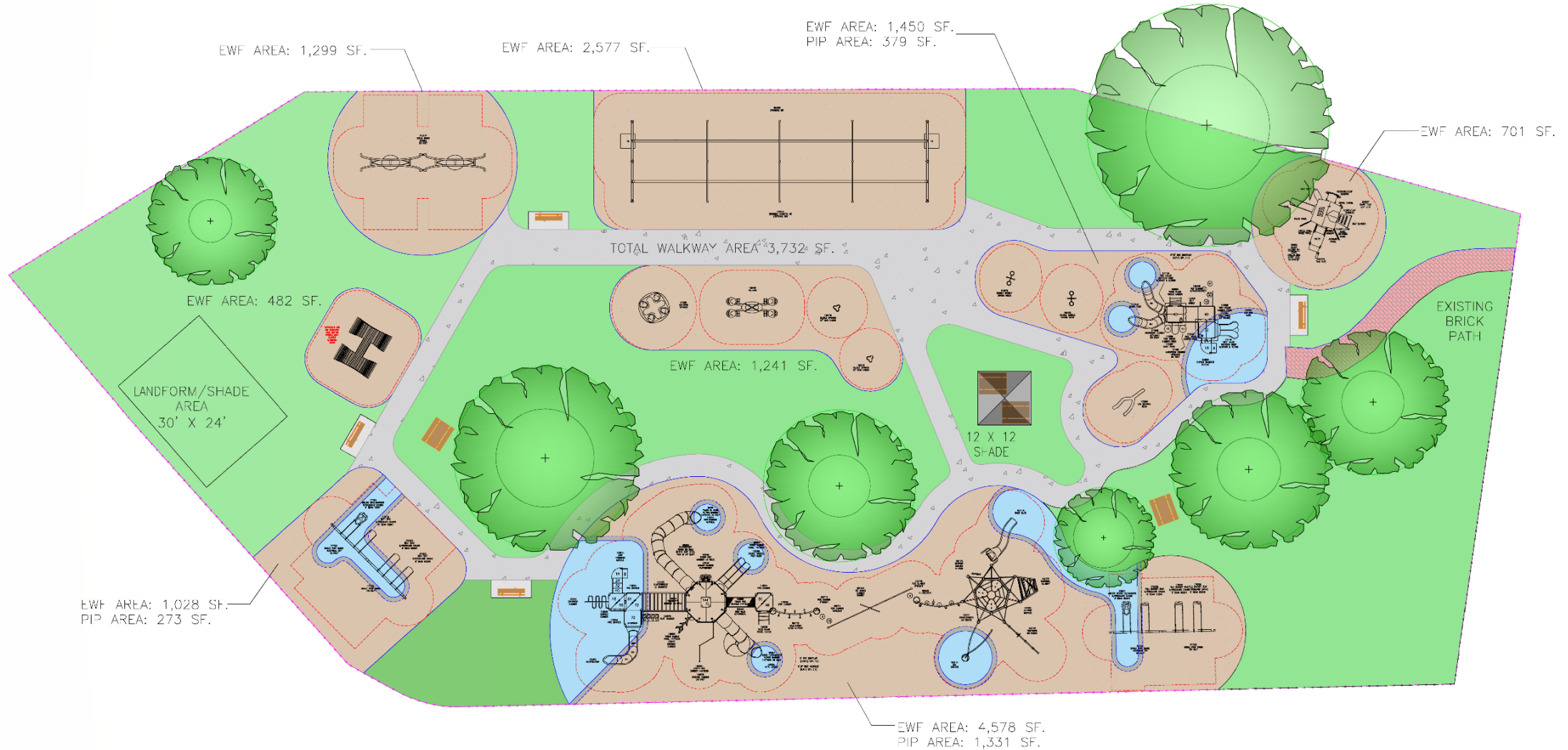
M.E. O'BRIEN &  
SONS, INC.  
MEGHAN O'BRIEN

SYSTEM TYPE:  
PB/PS/IND

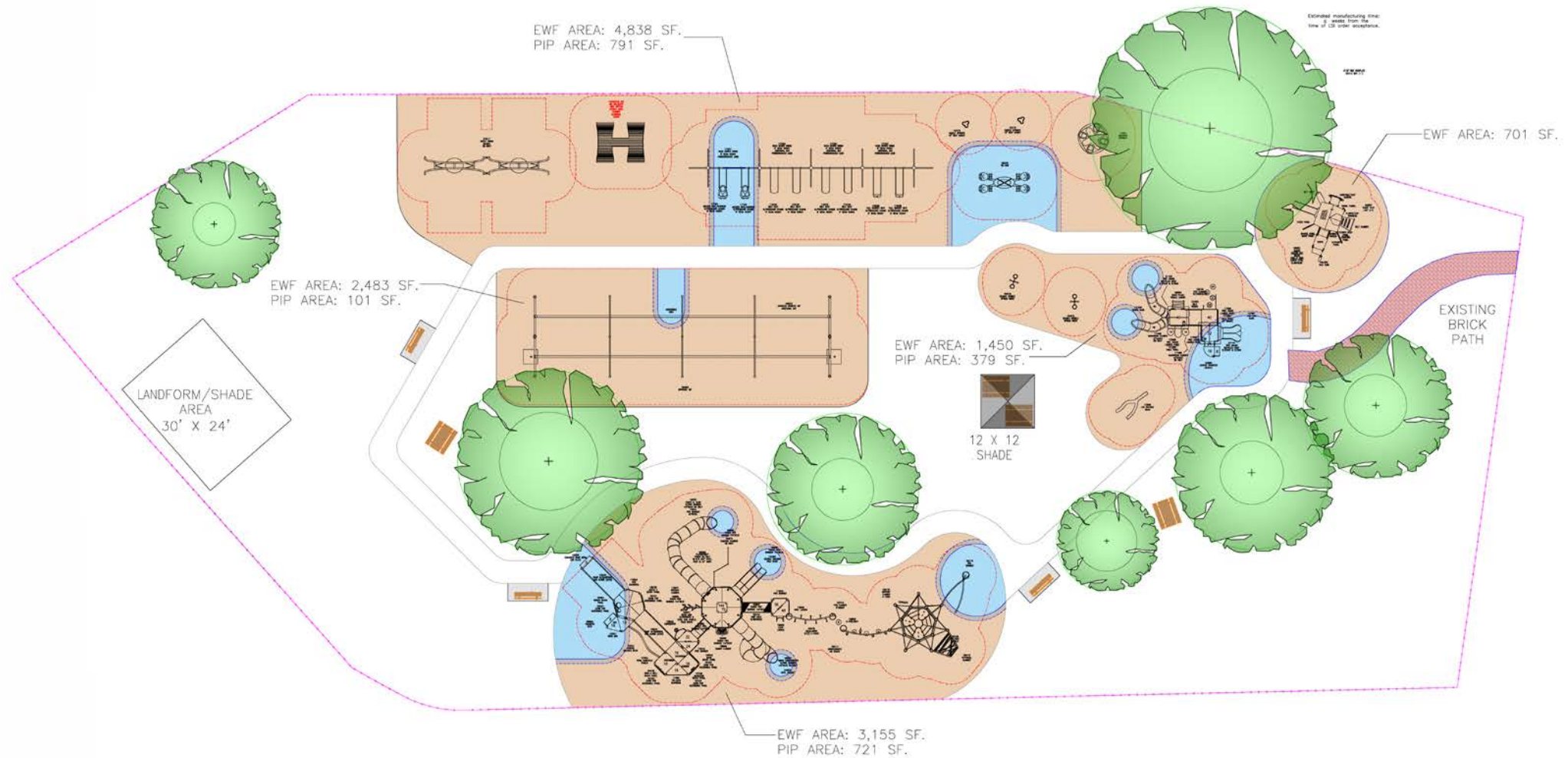
DRAWING #:  
ME017595



# O'Brien and Sons - ME0175952D ZOOM



# O'Brien and Sons - MEO18024 2D



# O'Brien and Sons - MEO18024 3D Tower Only

ROBERTS FIELD

CHELMSFORD, MA January 15, 2018 MEO18024 3D TOWER ONLY



# O'Brien and Sons - MEO18024 3D Tower Only

ROBERTS FIELD

CHELMSFORD, MA January 15, 2018 MEO18024 3D TOWER ONLY





# O'Brien and Sons - MEO18024 3D Tower Only

ROBERTS FIELD

CHELMSFORD, MA January 15, 2018 MEO18024 3D TOWER ONLY



# Second Arborist Report Update & Discussion

- Tree Report [Link Here](#)
- Report references soil care, fertilization, cabling and pruning for four trees (apple, maple, linden and maple – front to back)
- Recommends removing one tree:
  - Take down the storm damaged Bradford Pear located at the side of playground. Leave stump as close to grade as possible. Remove resulting debris.
  - Removal of pear tree is recommended due to the unbalanced weight distribution in the canopy, wounds and decay from previous storm damage, and knowledge of species tendency to break under loading from weight of snow and ice.



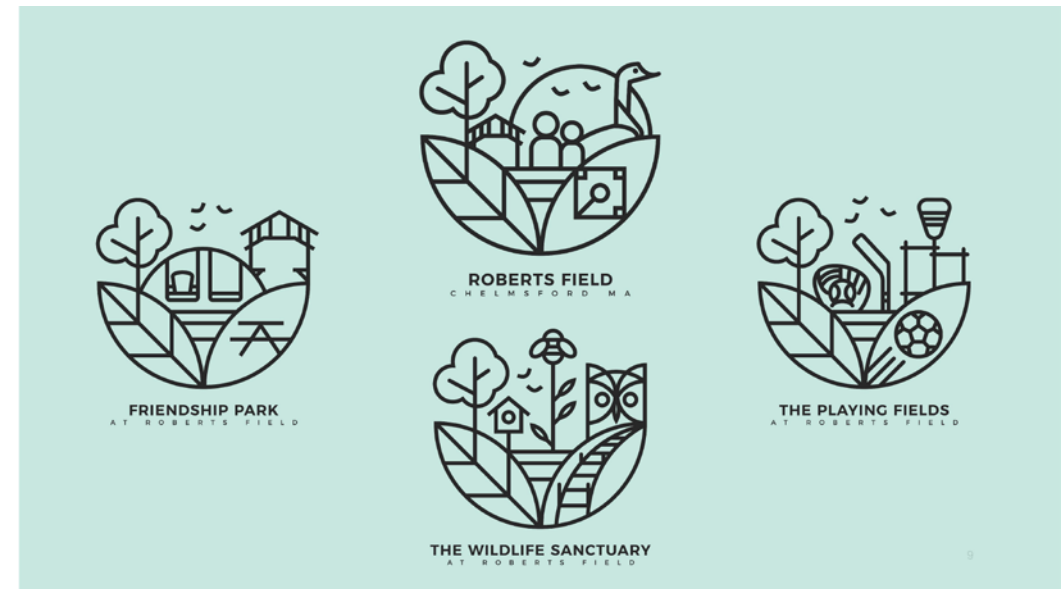
# Twisted Slide Recycling Update

- Per Steve Jahnle – “The slide is in Connecticut and will be installed in the spring.”



# Fundraising Update & Discussion

- Friends of Roberts Field Update
  - Bank account opened
  - Articles of Organization filed with state
  - IRS 1023 in works (ETA filed in 2 weeks)
  - New Park Branding and Logos approved by the BOS
    - [www.townofchelmsford.us/AgendaCenter/ViewFile/Item/1822?fileID=2971](http://www.townofchelmsford.us/AgendaCenter/ViewFile/Item/1822?fileID=2971)
- “Buy a Brick” Campaign
- Restaurant Flyer Campaign
- Grant Writing



# Volunteer Update & Discussion

- Roberts Field Advisory Committee Email List – 351 (331) addresses
- Friends of Roberts Field Facebook Group – 572 (551) members
- Friends of Roberts Field Membership forms – 16 completed forms

# Next Meeting Date

- Next Steps: Public input sessions, finalize playground design (February)
- February Best Available Dates:
  - Monday, Feb 5
  - Wednesday, Feb 7
  - Monday, Feb 19
  - Tuesday, Feb 20
  - Wednesday, Feb 21
- Or Room 205 And A Camera
  - Tuesday, Feb 6
  - Monday, Feb 12
  - Wednesday, Feb 14
  - Monday, Feb 26
  - Tuesday, Feb 27
  - Wednesday, Feb 28